

MELBOURNE  
ART FAIR  
20—23 FEB '25

# LACHLAN STONEHOUSE

BOOTH L2

**Inquiries**

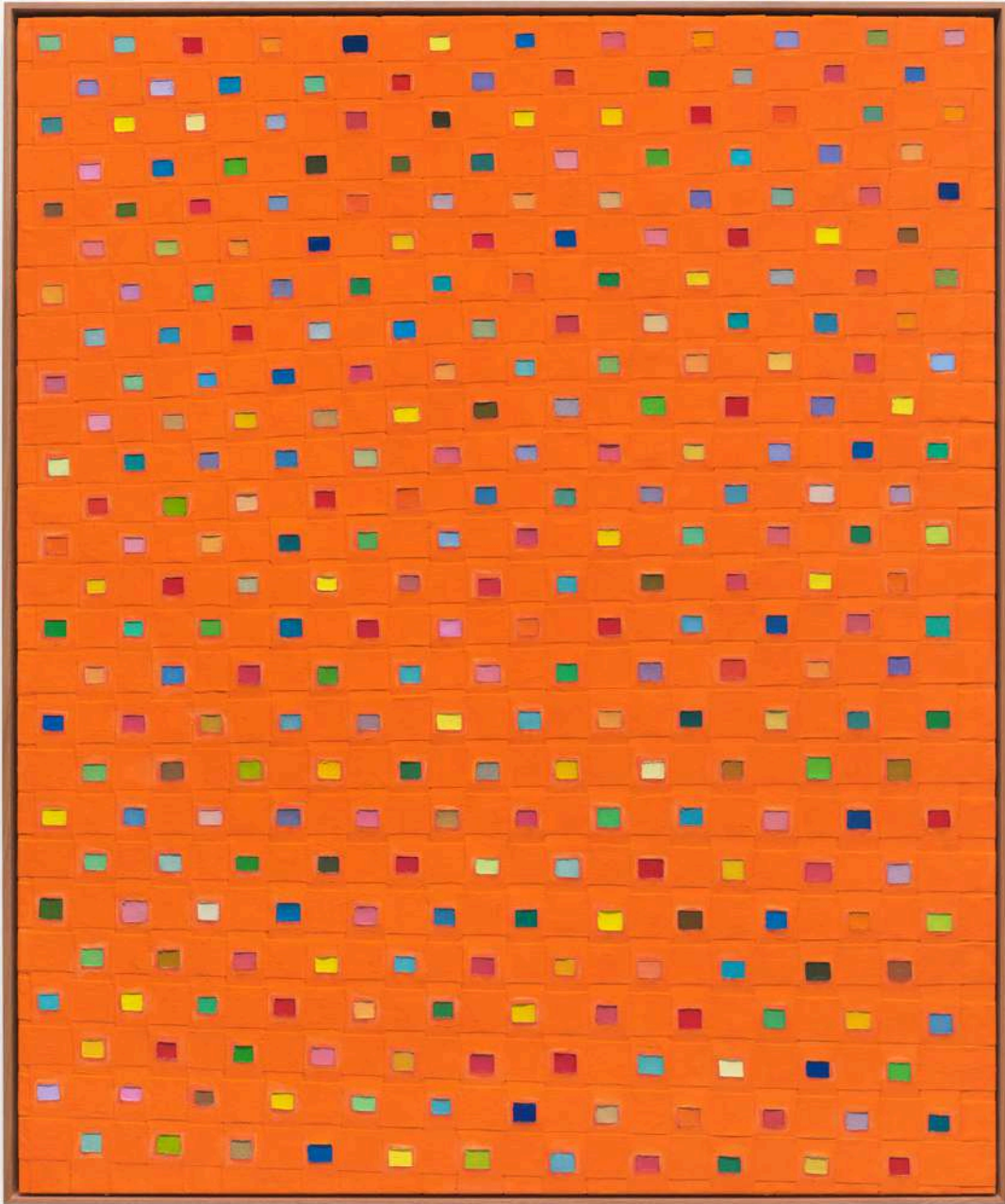
T: (03) 9043 6704

E: [info@fivewalls.com.au](mailto:info@fivewalls.com.au)

W: [fivewalls.com.au](http://fivewalls.com.au)

**Five Walls Gallery** Level 1 / 119 Hopkins St. Footscray | Wed-Sat 12-5pm





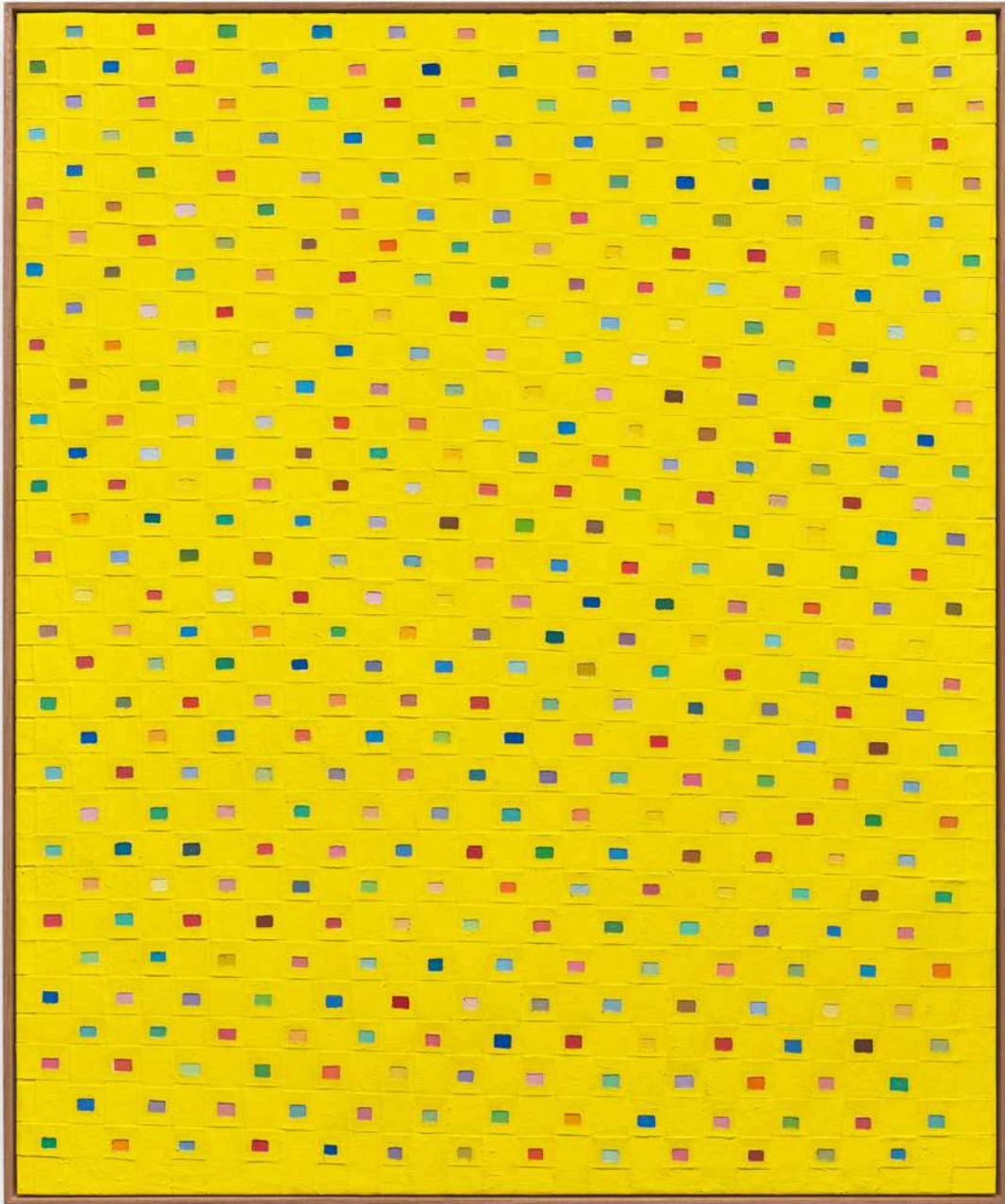
*Push and Pull*

2024-2025

oil, wax, linen, adhesive, staples on artist  
board in Australian hardwood frame

120 x 100 cm

SOLD



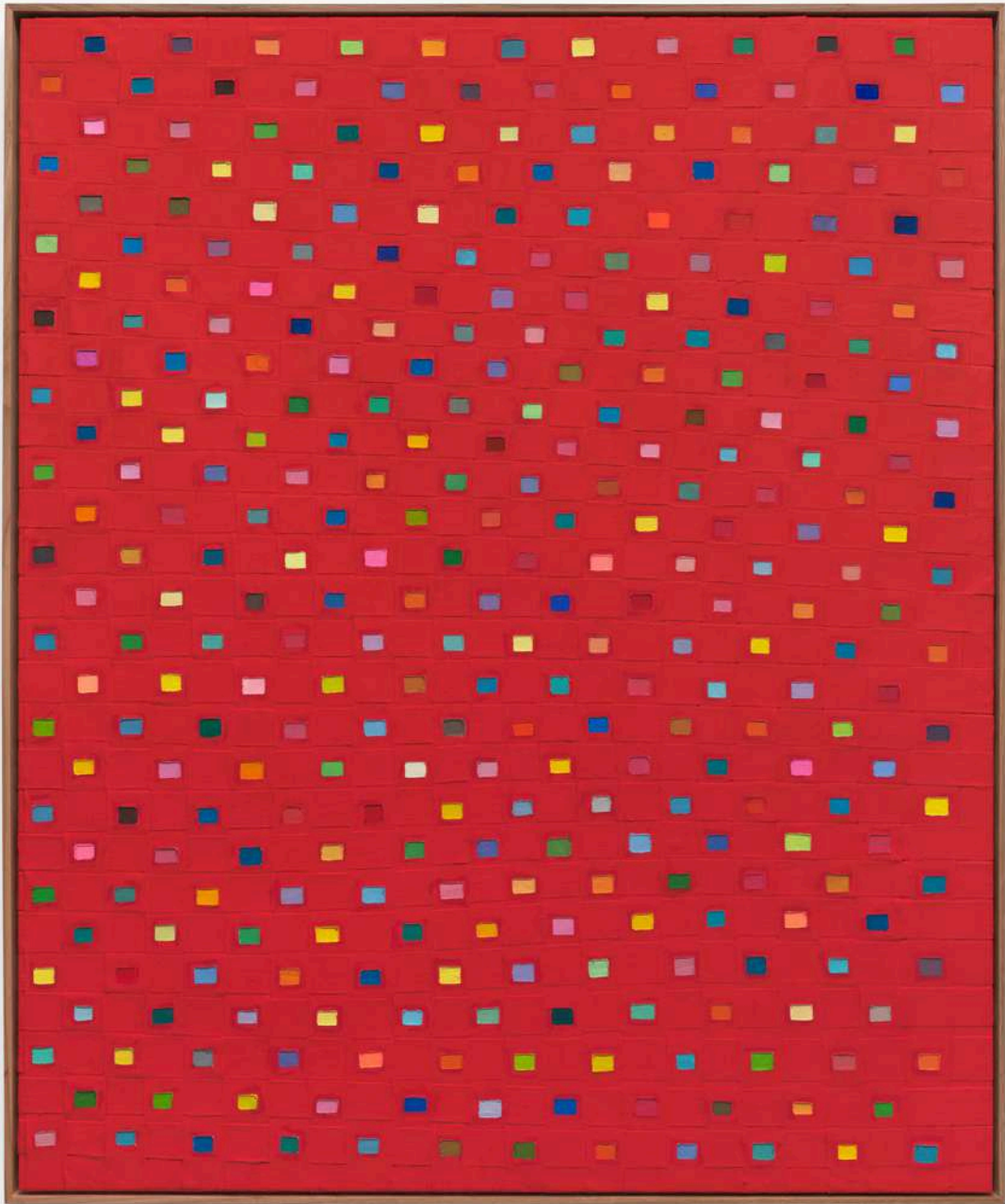
*Moving Sunlight*

2024-2025

oil, wax, linen, adhesive, staples on artist  
board in Australian hardwood frame

120 x 100 cm

SOLD



*Through on Over*

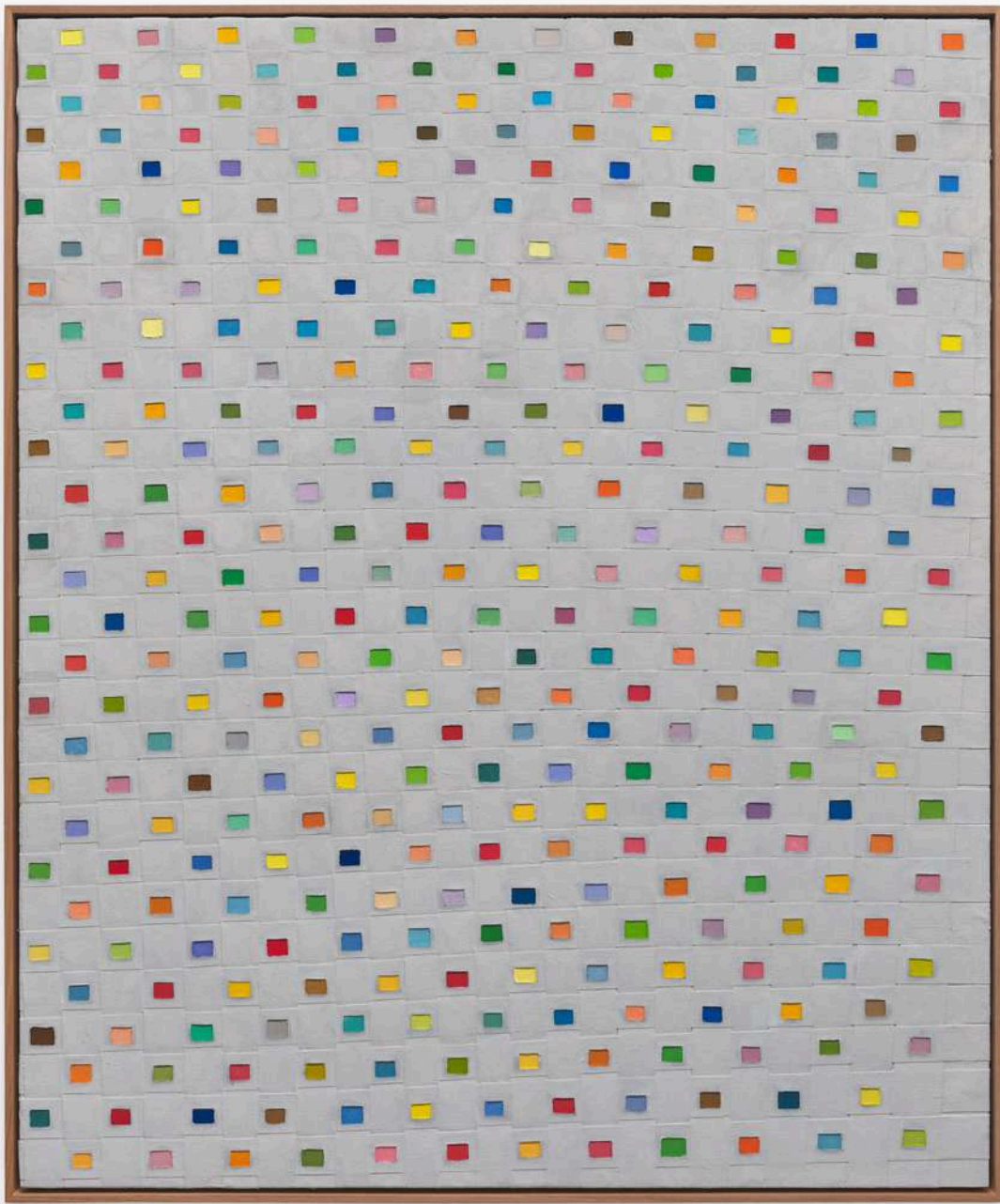
2024-2025

oil, wax, linen, adhesive, staples on artist  
board in Australian hardwood frame

120 x 100 cm

\$7,700





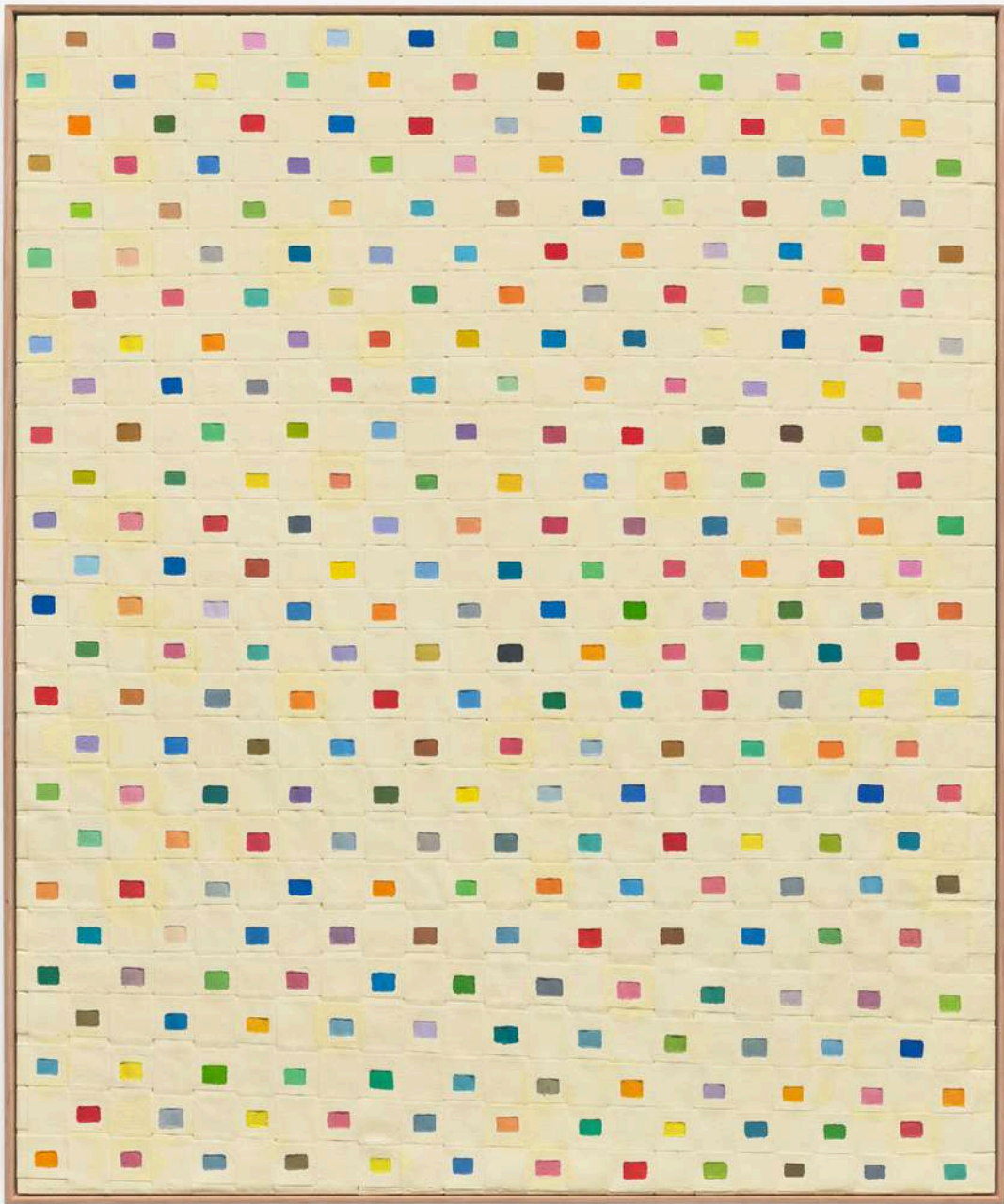
*Light Broke*

2024-2025

oil, wax, linen, adhesive, staples on artist  
board in Australian hardwood frame

120 x 100 cm

\$7,700



*Dreams in Colour*

2024-2025

oil, wax, linen, adhesive, staples on artist  
board in Australian hardwood frame

120 x 100 cm

SOLD



*From Above and From Below*

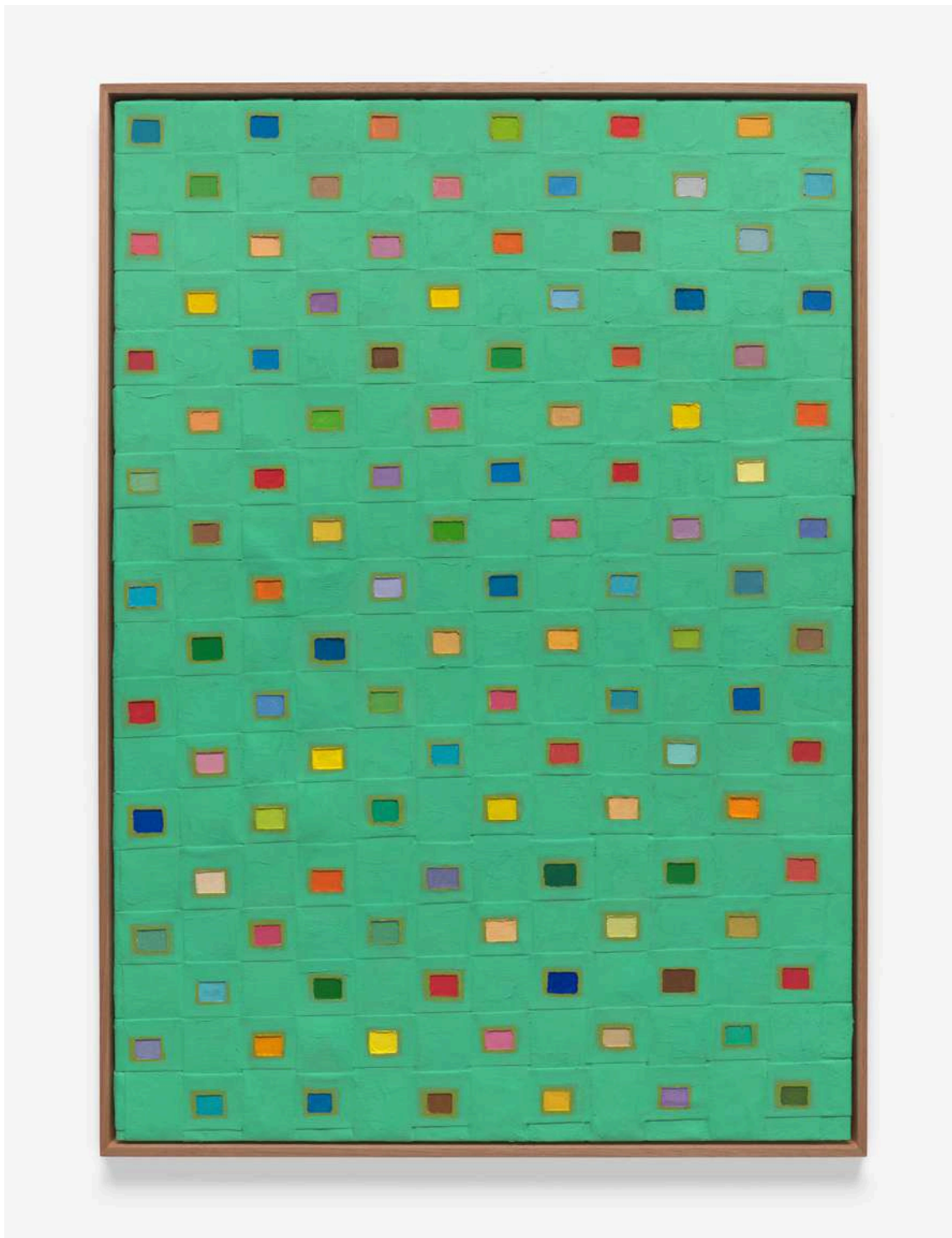
2024-2025

oil, wax, linen, adhesive, staples on artist  
board in Australian hardwood frame

84 x 59.4 cm

SOLD





*The Way it Is*

2024

oil, wax, linen, adhesive on artist  
board in Australian hardwood frame

84 x 59.4 cm

SOLD





*Light on Light (Between Worlds)*

2024-2025

oil, wax, linen, adhesive, staples on artist  
board in Australian hardwood frame

84 x 59.4 cm

\$5,100



*New Water*

2024-2025

oil, wax, linen, adhesive, staples on artist  
board in Australian hardwood frame

84 x 59.4 cm

\$5,100



*Open Road (St Mary's Pass)*

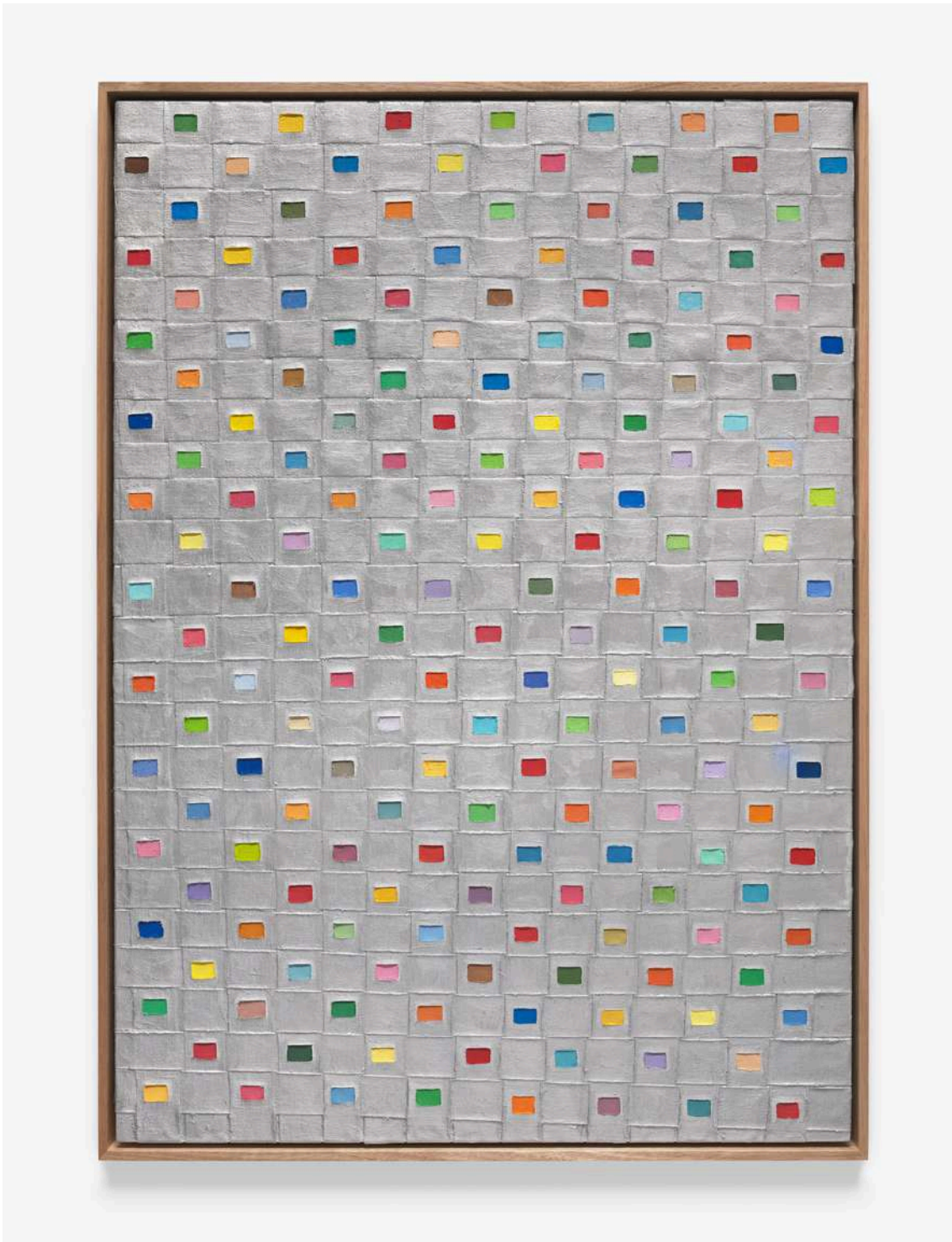
2024-2025

oil, wax, linen, adhesive, staples on artist  
board in Australian hardwood frame

84 x 59.4 cm

\$5,100





*Jazz, back and forth*

2024-2025

oil, linen, adhesive, staples on artist board

in Australian hardwood frame

84 x 59.4 cm

\$5,100



*Winter Stars*

2024-2025

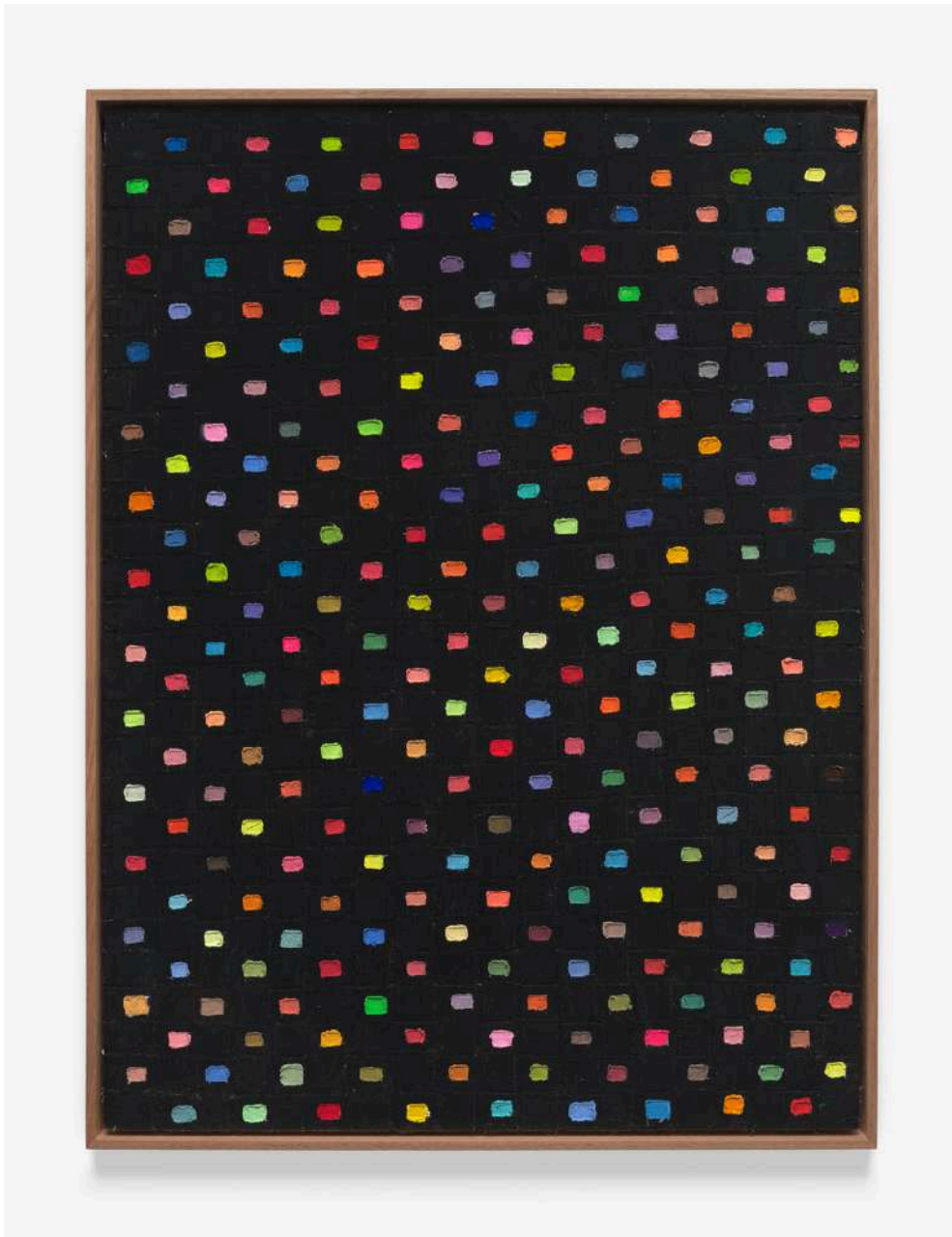
oil, linen, adhesive, staples on artist board

in Australian hardwood frame

84 x 59.4 cm

\$5,100





*Night crossing*

2024

linen, adhesive, oil, acrylic and Flashe in  
Australian hardwood frame

76 x 56 cm

\$4,200





*Neon Orange Field*

2024

linen, adhesive, oil staples on artist board  
in Australian hardwood frame

76 x 56 cm

\$4,200



*Pyrrole Red Field*

2024

linen, adhesive, oil staples on artist board

in Australian hardwood frame

76 x 56 cm

\$4,200



*Colour Field 12*

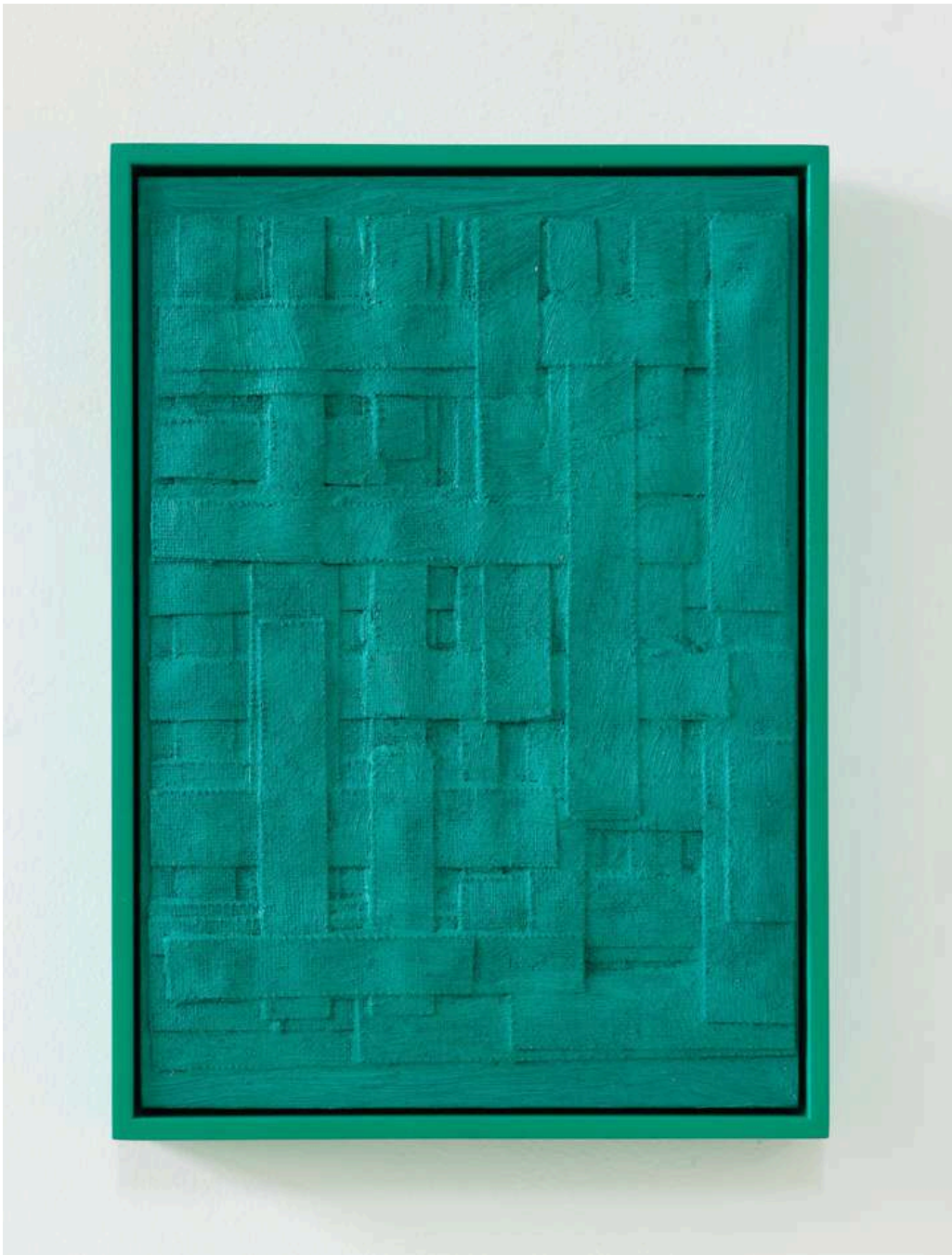
2023-2024

canvas, oil, adhesive on artist board

150 x 120 cm

SOLD





*Green Monochrome*

2022

oil, linen and adhesive on artist board in  
custom frame

31 x 22.5 cm

\$1,600



*Phthalo blue Monochrome*

2022

oil, linen and adhesive on artist board in  
custom frame

31 x 22.5 cm

\$1,600



*Black Monochrome*

2022

acrylic and canvas on artist board in  
custom frame

31 x 22.5 cm

\$1,600





*White Monochrome*

2022

acrylic and canvas on artist board in  
custom frame

31 x 22.5 cm

SOLD



*Grey Monochrome*

2022

acrylic and canvas on artist board in  
custom frame

31 x 22.5 cm

SOLD



*Orange Monochrome*

2022

acrylic and canvas on artist board in custom  
frame

31 x 22.5 cm

\$1,600





Lachlan Stonehouse, 2022, Artist portrait by Annika Kafcaloudis

## Lachlan Stonehouse

Five Walls Gallery is thrilled to announce our participation in the Melbourne Art Fair from February 20–23, 2025. For our second entry, we will present a solo exhibition by Melbourne-based, Tasmanian-born artist Lachlan Stonehouse. If you are attending the MAF we invite you to visit us at booth L2. To register your interest in our MAF preview catalogue please contact the gallery on +61 3 90436704 or email [info@fivewalls.com.au](mailto:info@fivewalls.com.au)

Lachlan Stonehouse (b. 1999, Scottsdale, Tasmania) is an emerging artist known for his innovative approach to painting, drawing, and collage. His practice explores themes of recurrence, pattern-making, and the controlled alteration of surfaces, deeply engaging with the legacies of Modernism, Minimalism, and Post-Minimalism to develop new techniques.

At the core of Stonehouse's work is an investigation into the foundations of painting, with a focus on its structural supports—particularly the woven grid. This recurring motif acts as both a stabilising force and a perceptual puzzle, creating optical rhythms and repetitive patterns that can appear almost mechanical. While his paintings adhere to a structured, systematic approach, they are also imbued with play and spontaneity, challenging the rigidity of the grid and modernist aesthetics. His process embraces both fabricated and hand-constructed techniques, allowing imperfections and gestures to emerge within a controlled framework.

Stonehouse's recent body of work features oil and linen adhered to wooden substrates, unpacking the formalities of modernism and geometric abstraction. The handmade, off-kilter woven grids generate a sense of rhythm, suggesting how one experiences the world through bold patterns and vibrant colours. The structured surface is often disrupted by accentuated cutouts, layered uneven oil paint, and the repetitive overlaying of linen strips, transforming the painting process into an act of endurance. While the compositions may seem restrained, gestural expressions naturally unfold through the act of repetition, forming an endless cycle of pattern, rhythm, and reduction.

Stonehouse graduated with a Bachelor of Fine Art (Honours) from the Victorian College of the Arts, University of Melbourne. He held his debut solo exhibition at Five Walls Gallery in April 2024, followed by a two-person presentation at Sydney Contemporary alongside Emma Langridge in September 2024. His work has been exhibited widely in Melbourne, including at Caves ARI, Blindside ARI, Oigall Projects, George Paton Gallery, Centre for Contemporary Photography, and Arts Projects Australia, as well as in Tasmania at Sawtooth ARI and Poimena Gallery.

Notable awards include the George Paton Gallery Artist's Residency Award (2021) and the Vice Chancellor's Award of Excellence (2024). His work is held in several collections, including Macquarie Group (NSW), Leeuwin Estate (WA), Justin Art House Museum (VIC), Winton Group (QLD), UMSU (VIC), Melbourne University, and private collections across Australia and New Zealand.