

MELBOURNE
ART FAIR
20—23 FEB '25

LACHLAN STONEHOUSE

BOOTH L2

Inquiries

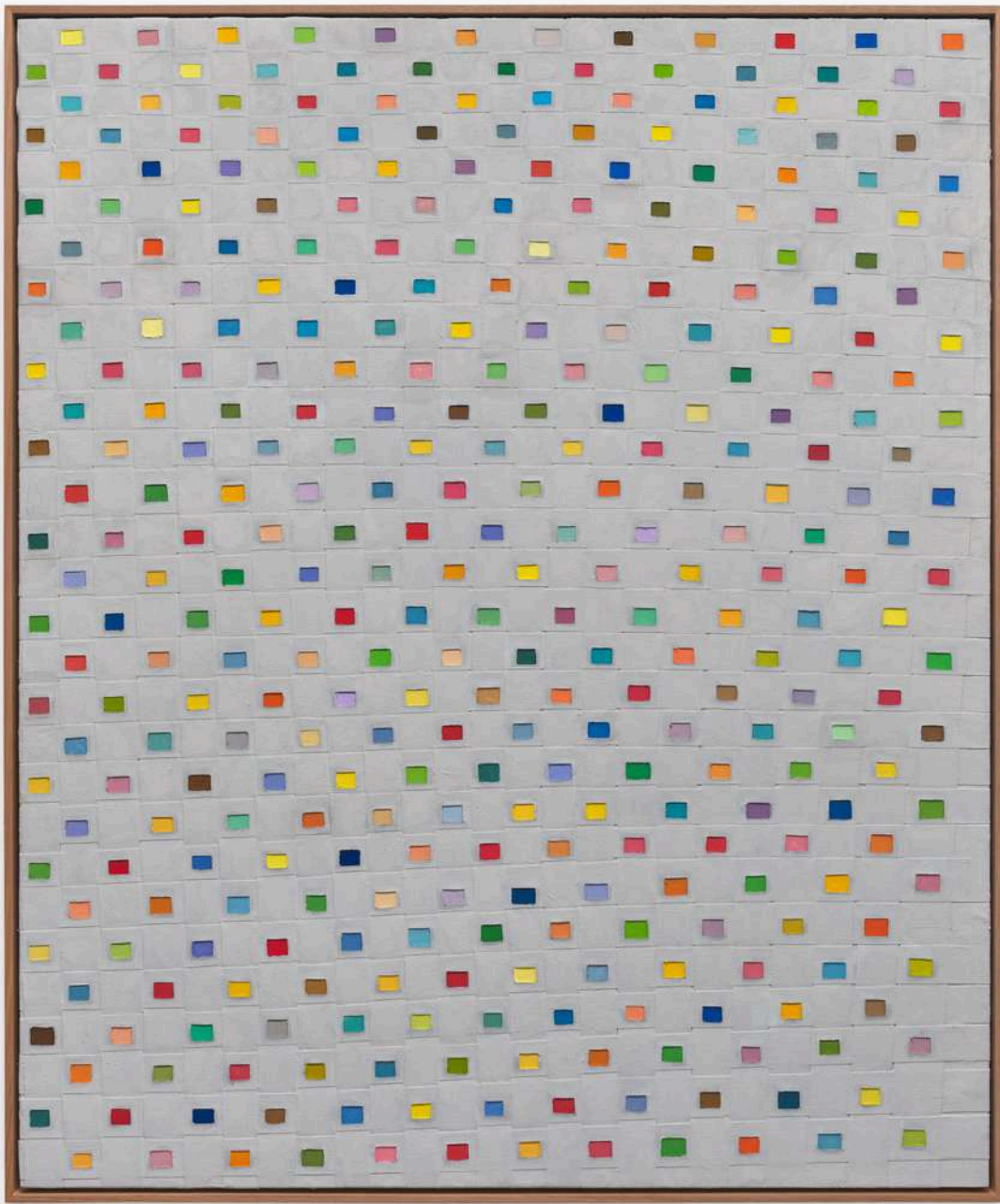
T: (03) 9043 6704

E: info@fivewalls.com.au

W: fivewalls.com.au

Five Walls Gallery Level 1 / 119 Hopkins St. Footscray | Wed-Sat 12-5pm





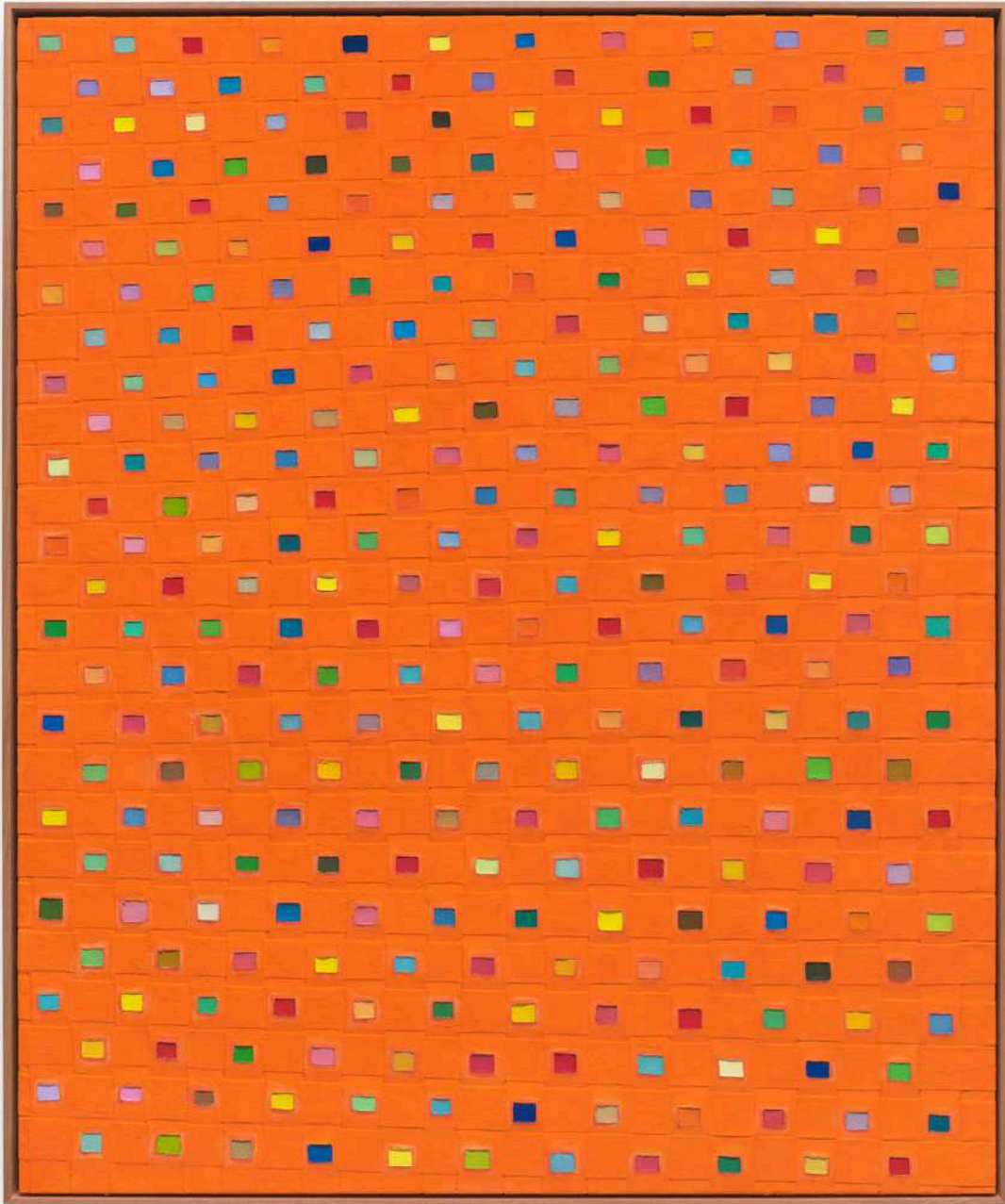
Light Broke

2024-2025

oil, wax, linen, adhesive, staples on artist
board in Australian hardwood frame

120 x 100 cm

\$7,700



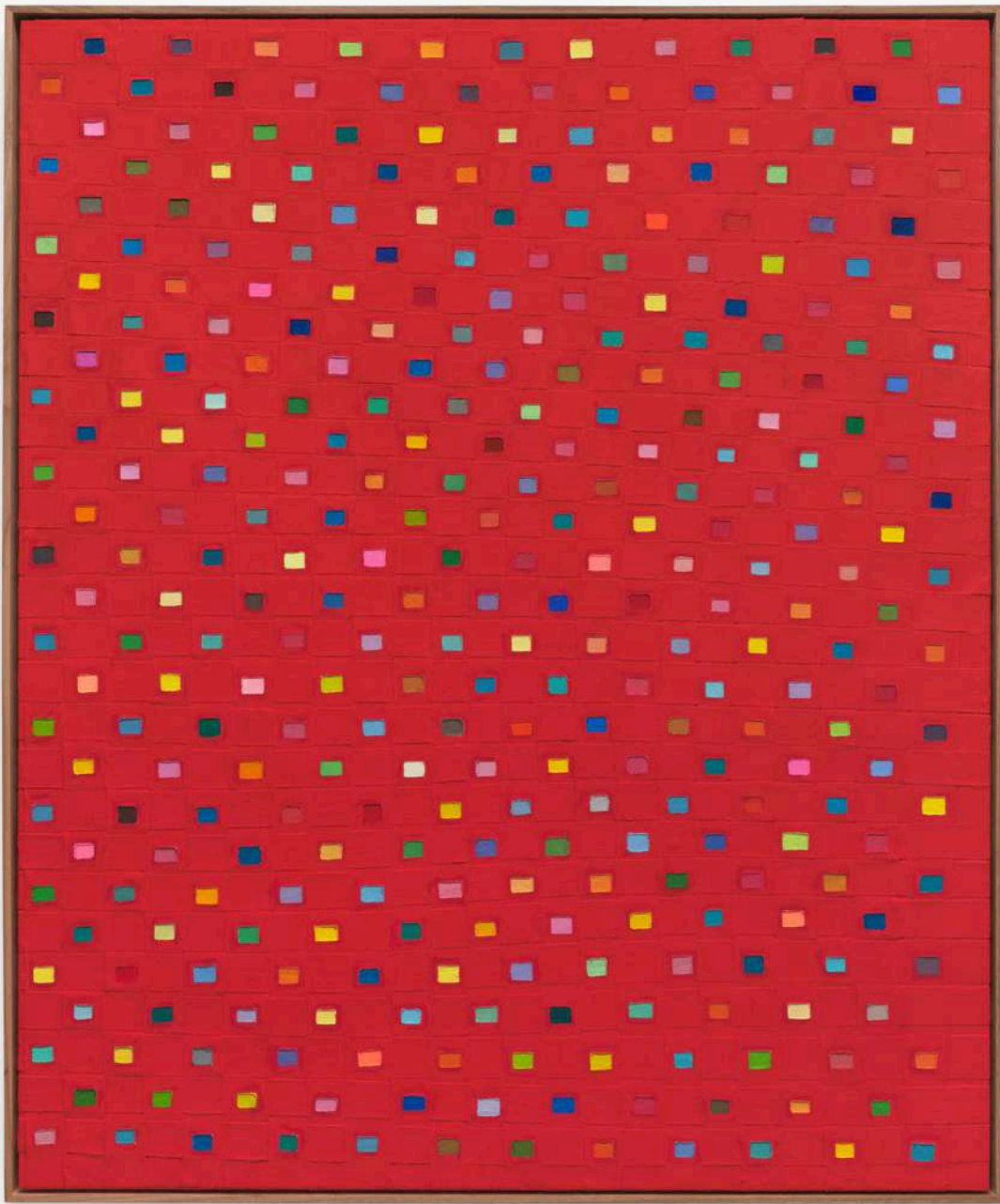
Push and Pull

2024-2025

oil, wax, linen, adhesive, staples on artist
board in Australian hardwood frame

120 x 100 cm

\$7,700



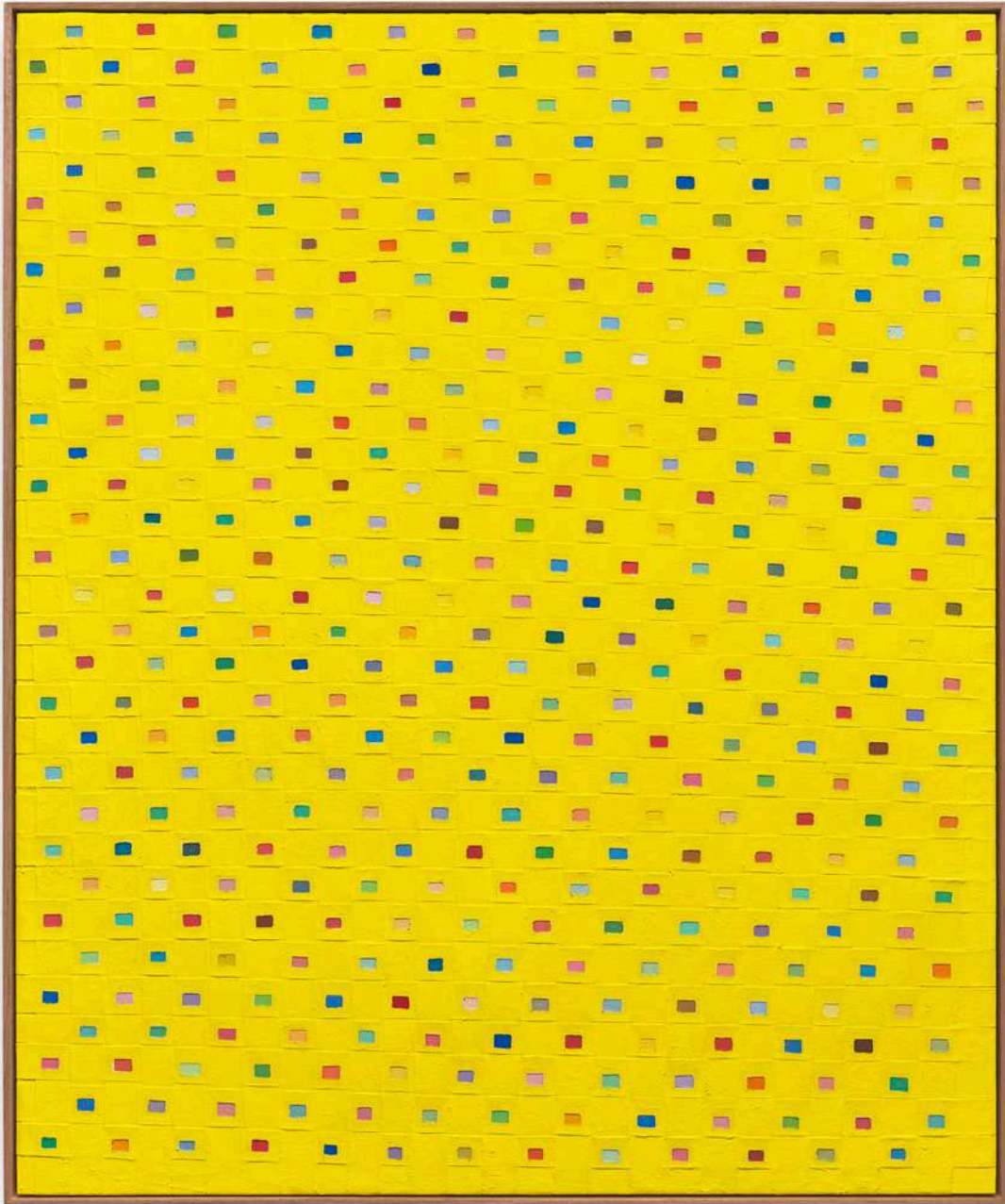
Through on Over

2024-2025

oil, wax, linen, adhesive, staples on artist
board in Australian hardwood frame

120 x 100 cm

\$7,700



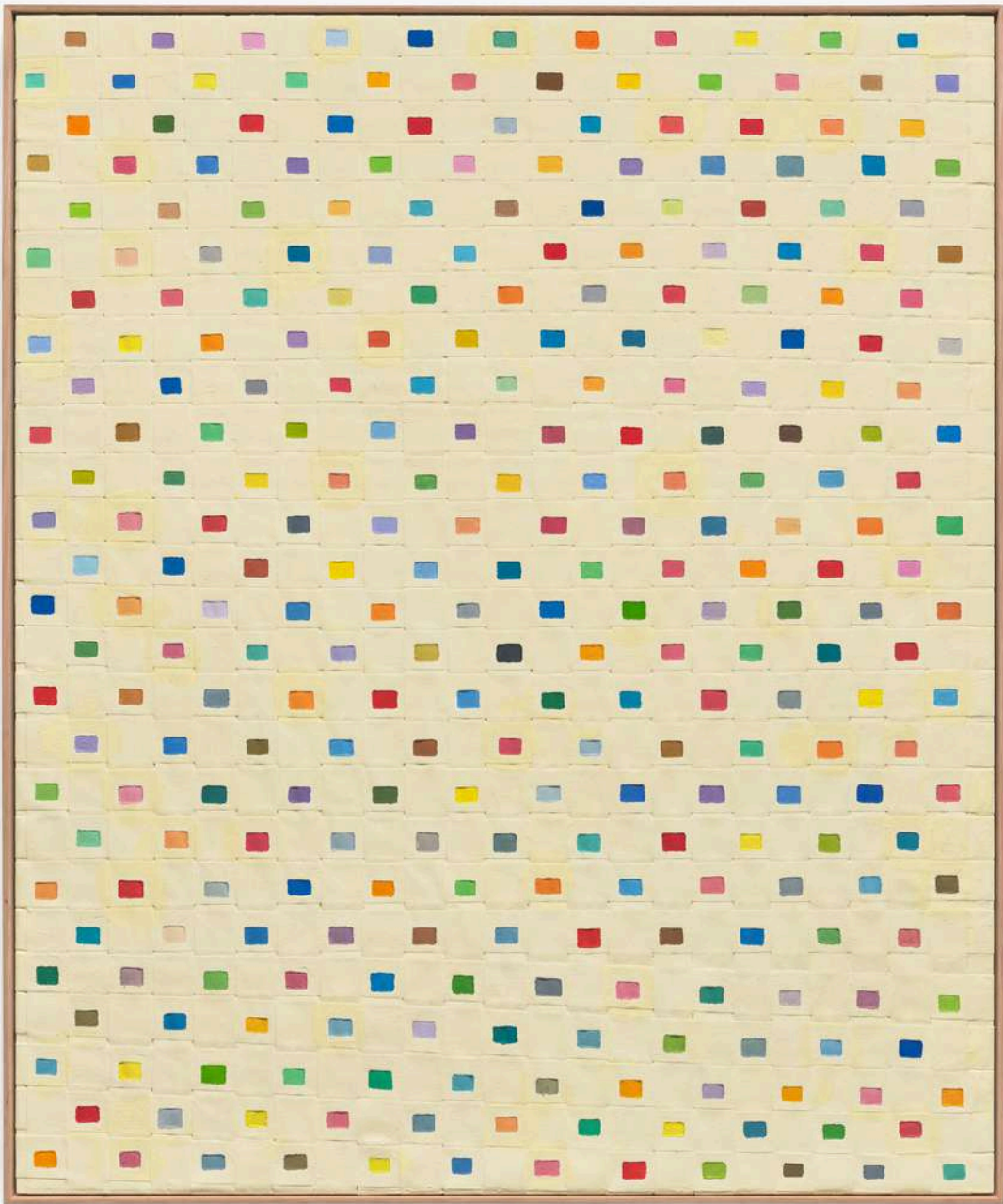
Moving Sunlight

2024-2025

oil, wax, linen, adhesive, staples on artist
board in Australian hardwood frame

120 x 100 cm

\$7,700



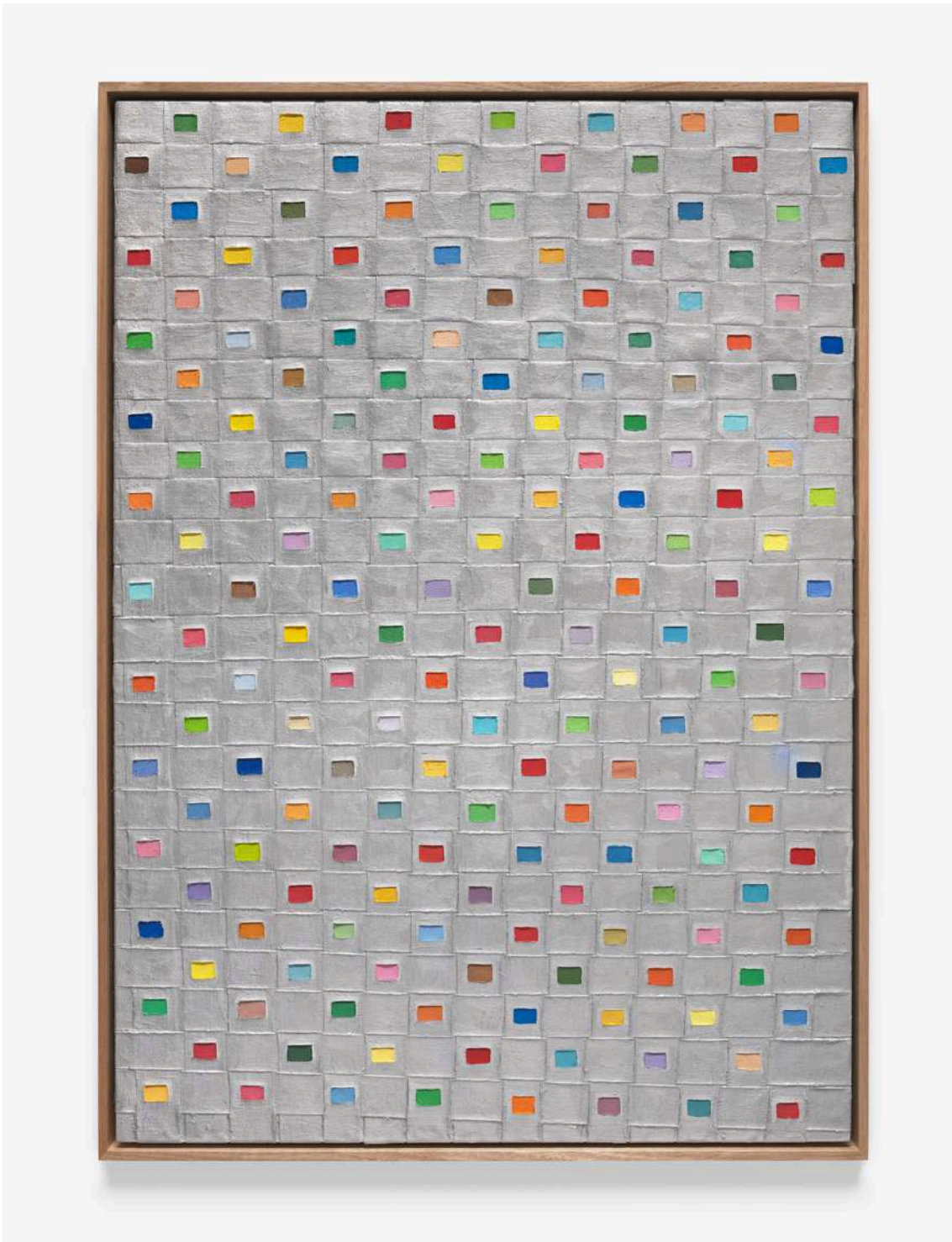
Dreams in Colour

2024-2025

oil, wax, linen, adhesive, staples on artist
board in Australian hardwood frame

120 x 100 cm

\$7,700



Jazz, back and forth

2024-2025

oil, linen, adhesive, staples on artist board

in Australian hardwood frame

84 x 59.4 cm

\$5,100



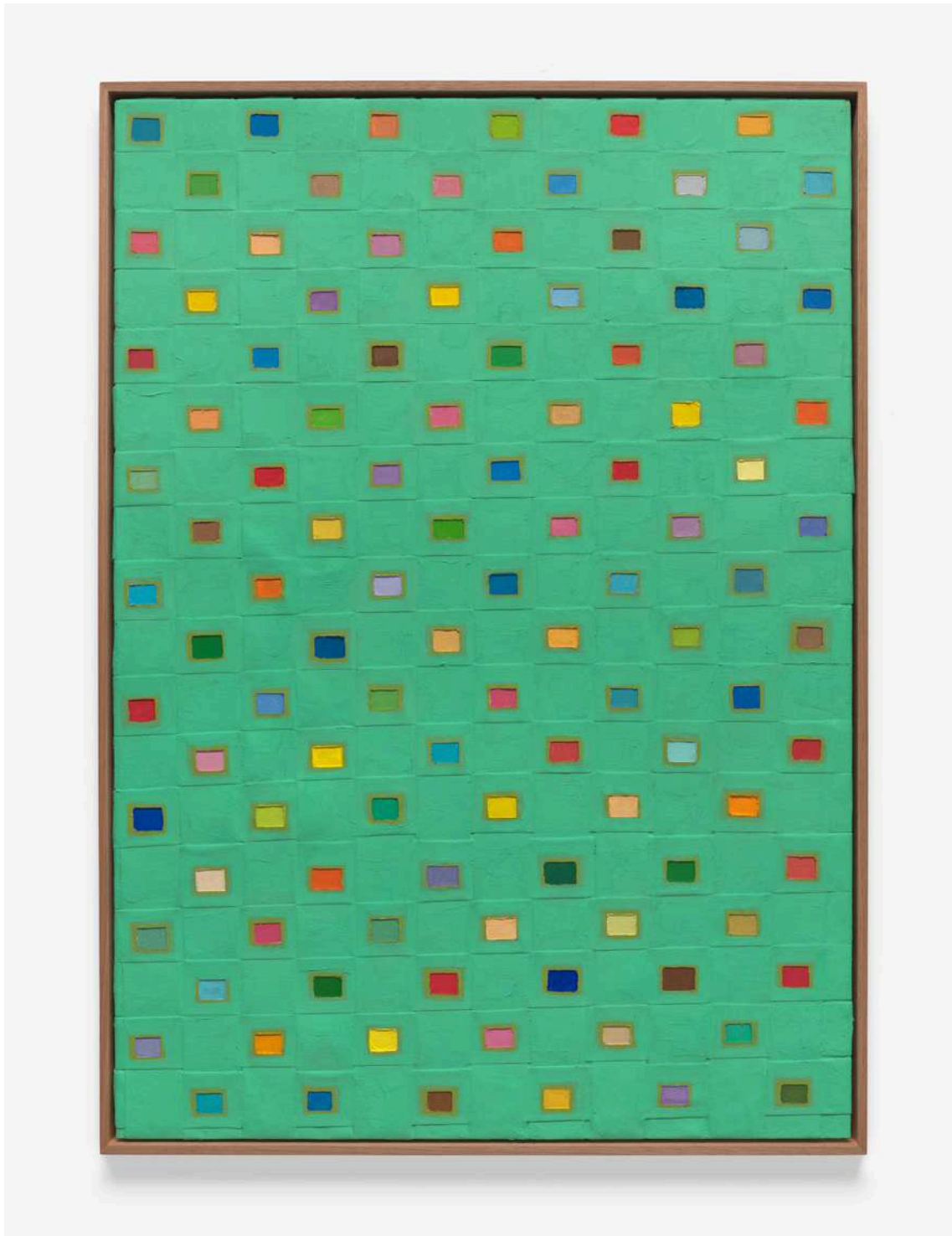
From Above and From Below

2024-2025

oil, wax, linen, adhesive, staples on artist
board in Australian hardwood frame

84 x 59.4 cm

\$5,100



The Way it Is

2024

oil, wax, linen, adhesive on artist
board in Australian hardwood frame

84 x 59.4 cm

\$5,100



Open Road (St Mary's Pass)

2024-2025

oil, wax, linen, adhesive, staples on artist
board in Australian hardwood frame

84 x 59.4 cm

\$5,100



Light on Light (Between Worlds)

2024-2025

oil, wax, linen, adhesive, staples on artist
board in Australian hardwood frame

84 x 59.4 cm

\$5,100



New Water

2024-2025

oil, wax, linen, adhesive, staples on artist
board in Australian hardwood frame

84 x 59.4 cm

\$5,100



Winter Stars

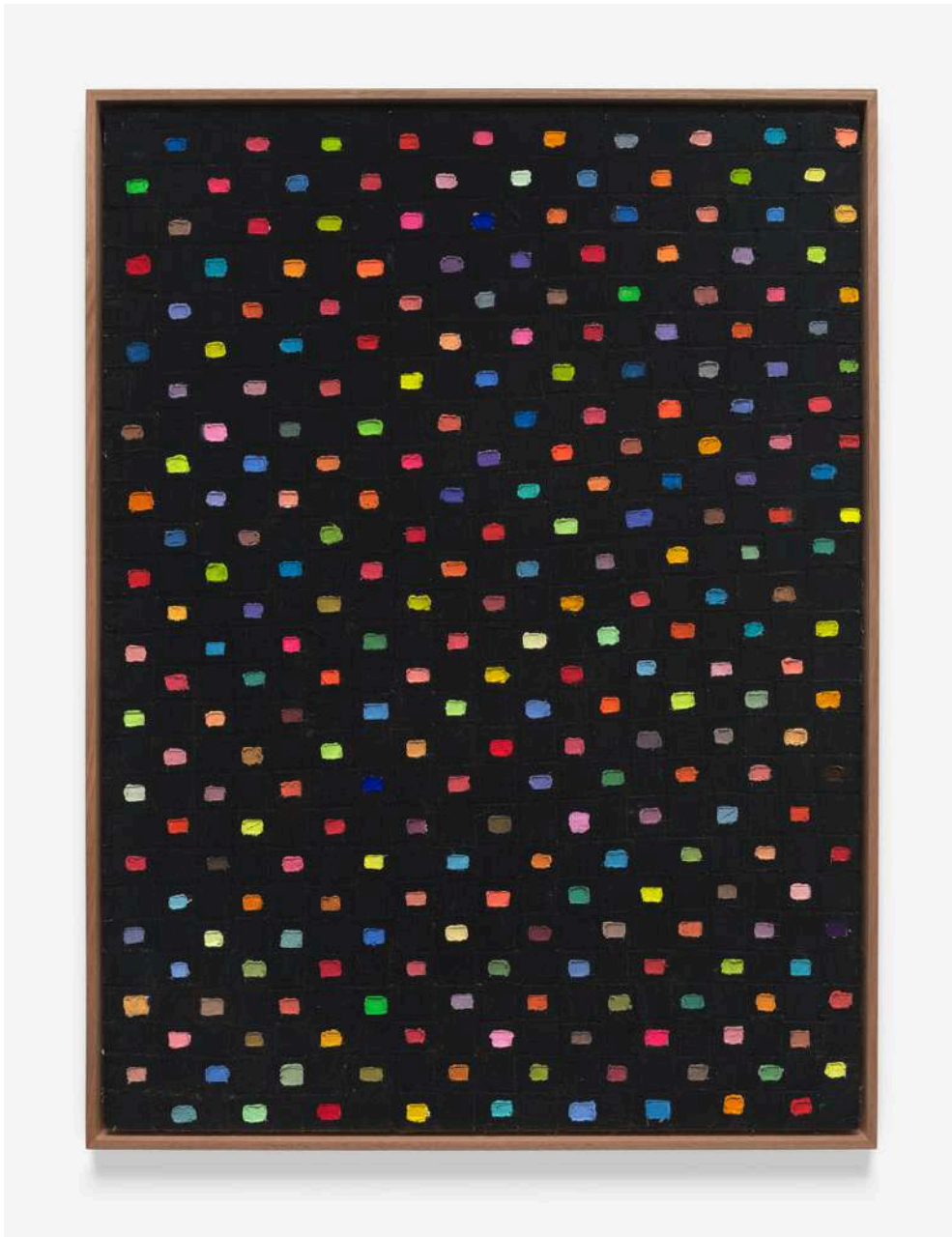
2024-2025

oil, linen, adhesive, staples on artist board

in Australian hardwood frame

84 x 59.4 cm

\$5,100



Night crossing

2024

linen, adhesive, oil, acrylic and Flashe in
Australian hardwood frame

76 x 56 cm

\$4,200



Neon Orange Field

2024

linen, adhesive, oil staples on artist board
in Australian hardwood frame

76 x 56 cm

\$4,200



Pyrrole Red Field

2024

linen, adhesive, oil staples on artist board

in Australian hardwood frame

76 x 56 cm

\$4,200



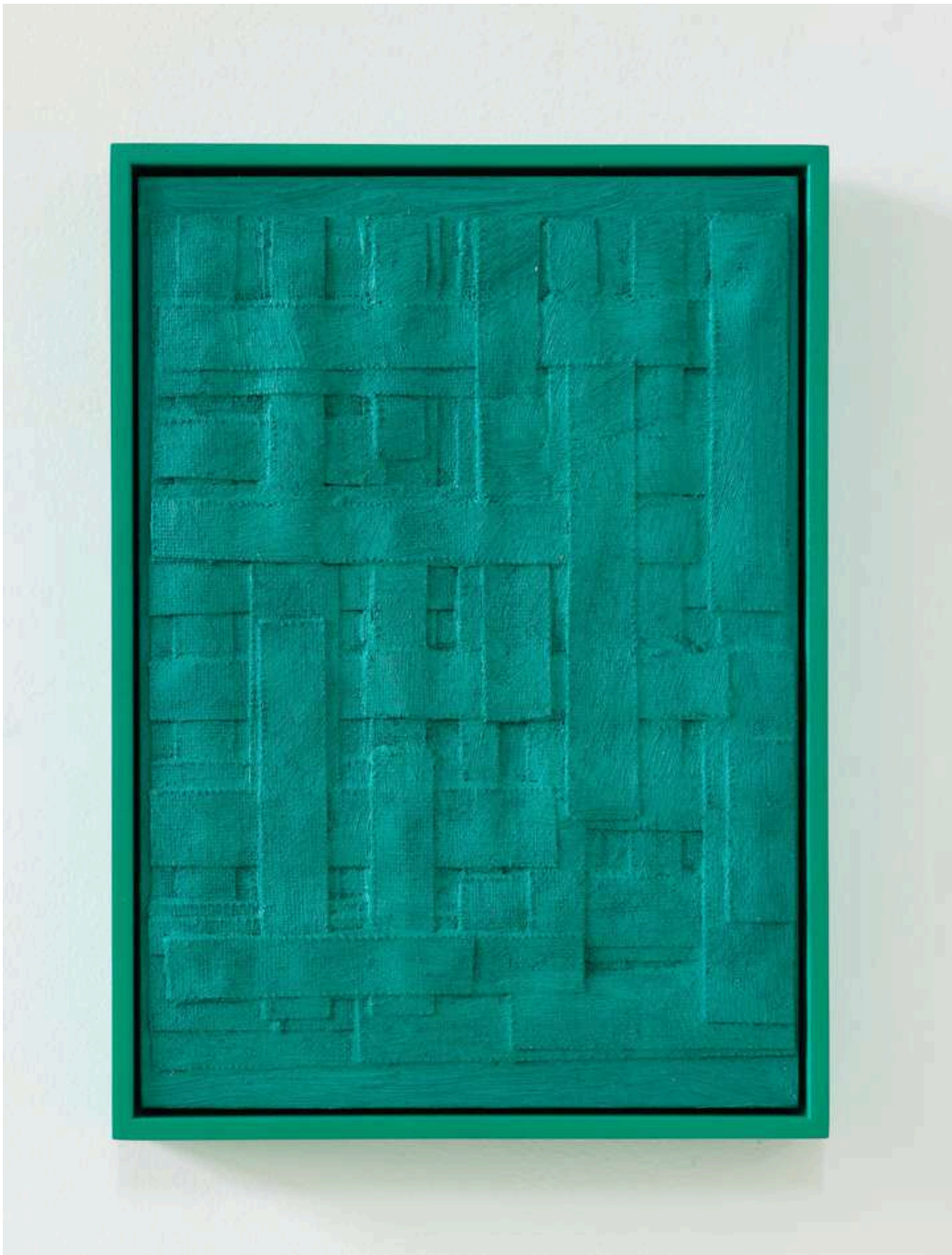
Colour Field 12

2023-2024

canvas, oil, adhesive on artist board

150 x 120 cm

\$9,300



Green Monochrome

2022

oil, linen and adhesive on artist board in
custom frame

31 x 22.5 cm

\$1,600



Phthalo blue Monochrome

2022

oil, linen and adhesive on artist board in
custom frame

31 x 22.5 cm

\$1,600



Black Monochrome

2022

acrylic and canvas on artist board in
custom frame

31 x 22.5 cm

\$1,600



White Monochrome

2022

acrylic and canvas on artist board in
custom frame

31 x 22.5 cm

\$1,600



Grey Monochrome

2022

acrylic and canvas on artist board in
custom frame

31 x 22.5 cm

\$1,600



Orange Monochrome

2022

acrylic and canvas on artist board in custom
frame

31 x 22.5 cm

\$1,600



Lachlan Stonehouse, 2022, Artist portrait by Annika Kafcaloudis

Lachlan Stonehouse

Five Walls Gallery is thrilled to announce our participation in the Melbourne Art Fair from February 20–23, 2025. For our second entry, we will present a solo exhibition by Melbourne-based, Tasmanian-born artist Lachlan Stonehouse. If you are attending the MAF we invite you to visit us at booth L2. To register your interest in our MAF preview catalogue please contact the gallery on +61 3 90436704 or email info@fivewalls.com.au

Lachlan Stonehouse (b. 1999, Scottsdale, Tasmania) is an emerging artist known for his innovative approach to painting, drawing, and collage. His practice explores themes of recurrence, pattern-making, and the controlled alteration of surfaces, deeply engaging with the legacies of Modernism, Minimalism, and Post-Minimalism to develop new techniques.

At the core of Stonehouse's work is an investigation into the foundations of painting, with a focus on its structural supports—particularly the woven grid. This recurring motif acts as both a stabilising force and a perceptual puzzle, creating optical rhythms and repetitive patterns that can appear almost mechanical. While his paintings adhere to a structured, systematic approach, they are also imbued with play and spontaneity, challenging the rigidity of the grid and modernist aesthetics. His process embraces both fabricated and hand-constructed techniques, allowing imperfections and gestures to emerge within a controlled framework.

Stonehouse's recent body of work features oil and linen adhered to wooden substrates, unpacking the formalities of modernism and geometric abstraction. The handmade, off-kilter woven grids generate a sense of rhythm, suggesting how one experiences the world through bold patterns and vibrant colours. The structured surface is often disrupted by accentuated cutouts, layered uneven oil paint, and the repetitive overlaying of linen strips, transforming the painting process into an act of endurance. While the compositions may seem restrained, gestural expressions naturally unfold through the act of repetition, forming an endless cycle of pattern, rhythm, and reduction.

Stonehouse graduated with a Bachelor of Fine Art (Honours) from the Victorian College of the Arts, University of Melbourne. He held his debut solo exhibition at Five Walls Gallery in April 2024, followed by a two-person presentation at Sydney Contemporary alongside Emma Langridge in September 2024. His work has been exhibited widely in Melbourne, including at Caves ARI, Blindside ARI, Oigall Projects, George Paton Gallery, Centre for Contemporary Photography, and Arts Projects Australia, as well as in Tasmania at Sawtooth ARI and Poimena Gallery.

Notable awards include the George Paton Gallery Artist's Residency Award (2021) and the Vice Chancellor's Award of Excellence (2024). His work is held in several collections, including Macquarie Group (NSW), Leeuwin Estate (WA), Justin Art House Museum (VIC), Winton Group (QLD), UMSU (VIC), Melbourne University, and private collections across Australia and New Zealand.